

Chalet Baltus



Beaumier
L'ALPAGA
Alt. 1100 M MEGÈVE ALPES



CHALET BALTUS

Away from Megève, perched at an altitude of 1100 metres and facing Mont-Blanc, discover a unique haven of peace. A chalet nestling in the heart of nature, in a cosy little hamlet.

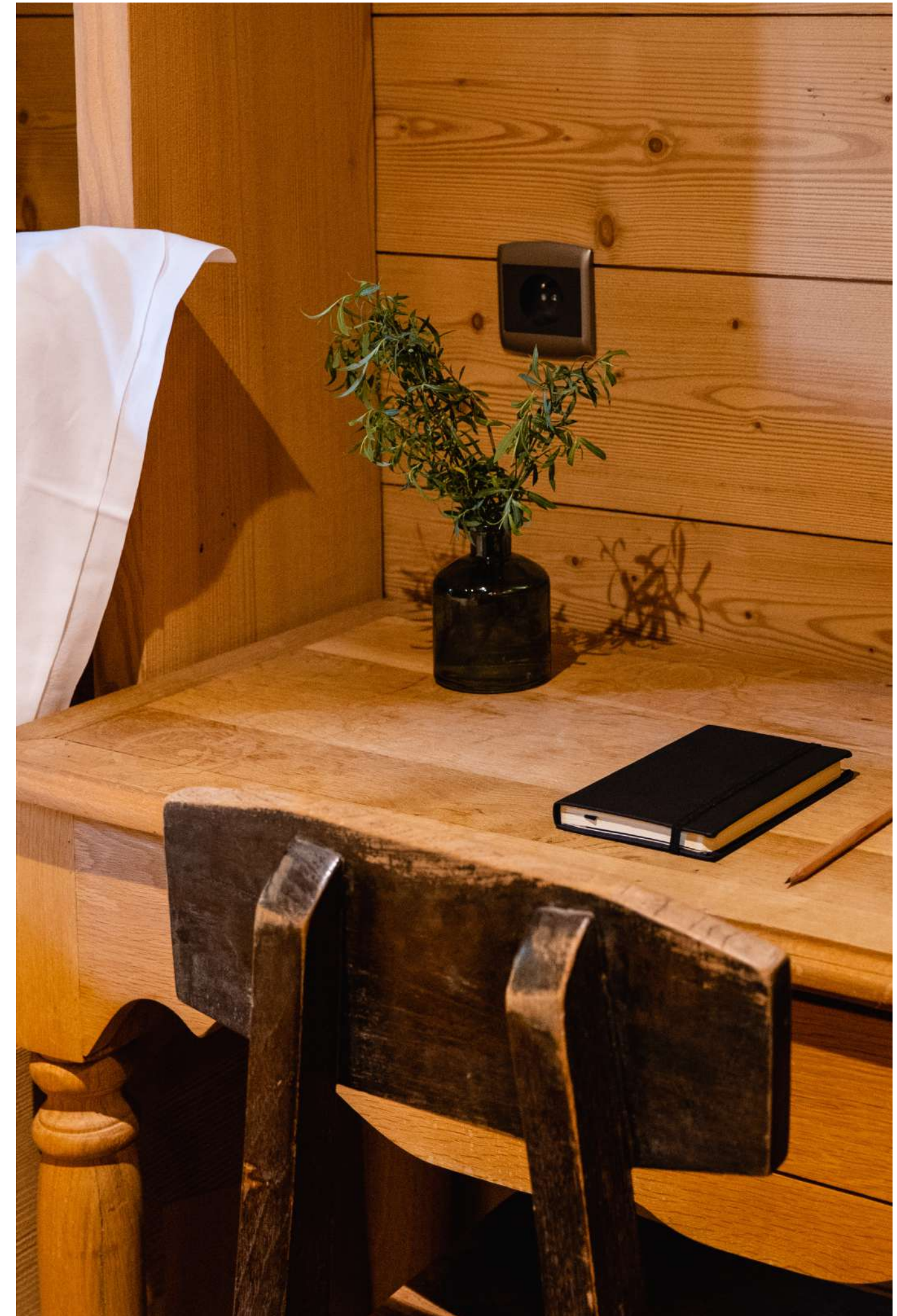
Combining an intimate atmosphere with hotel services, Chalet Baltus is the ideal place for an exceptional holiday.

With a surface area of 255m², this chalet has been designed in the purest Megevan tradition. It is designed to accommodate from 10 to 12 people on 3 floors, with its 5 bedrooms and 5 bathrooms. The large terraces and balconies are a natural invitation for guests to enjoy a moment of contemplation, facing the mountains.

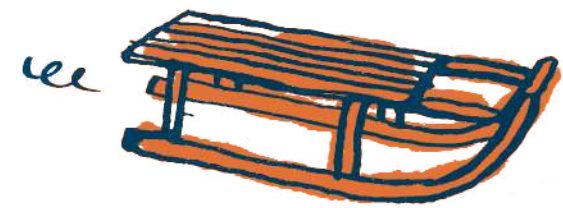




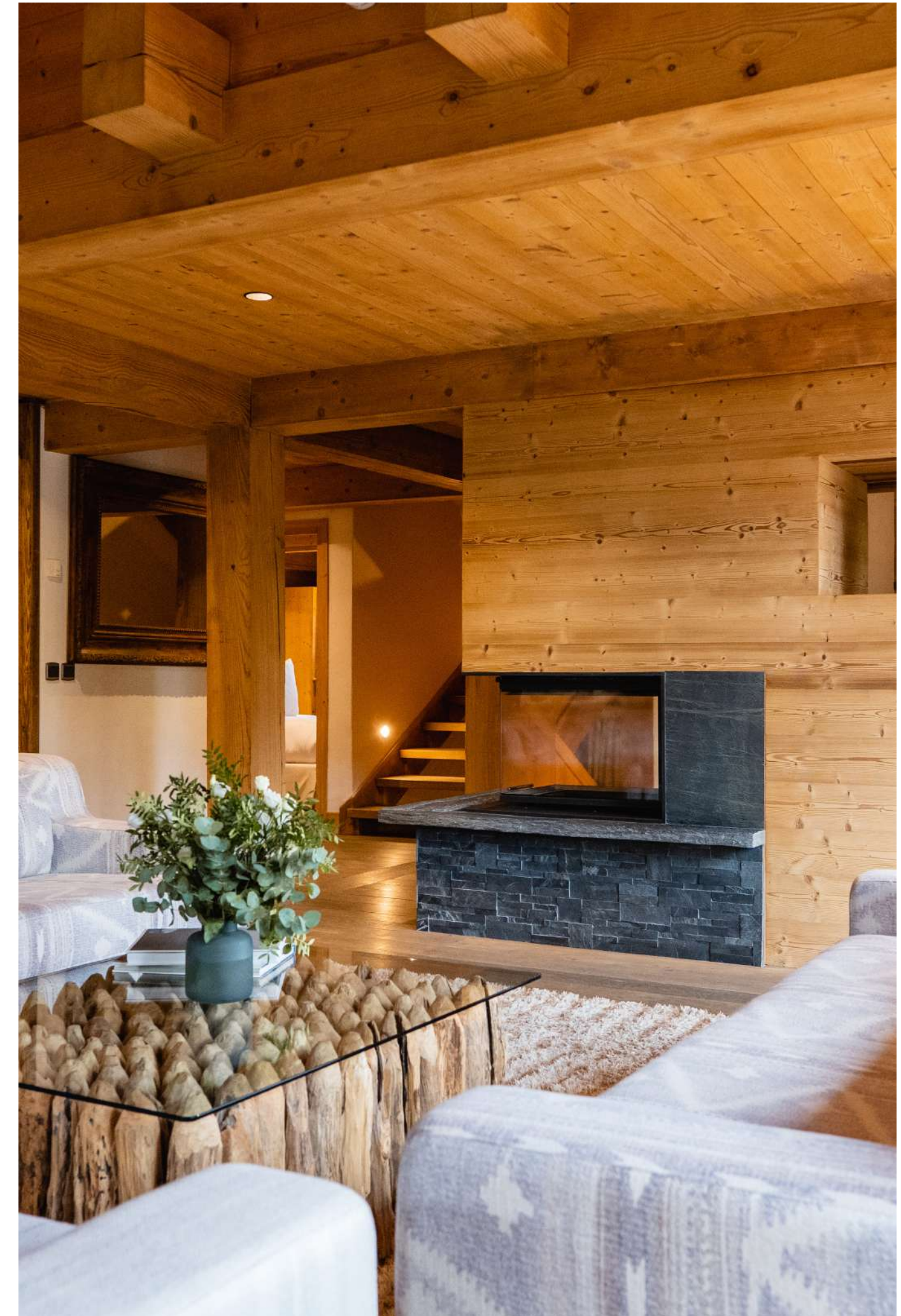
CHALET BALTUS



CHALET BALTUS



CHALET BALTUS





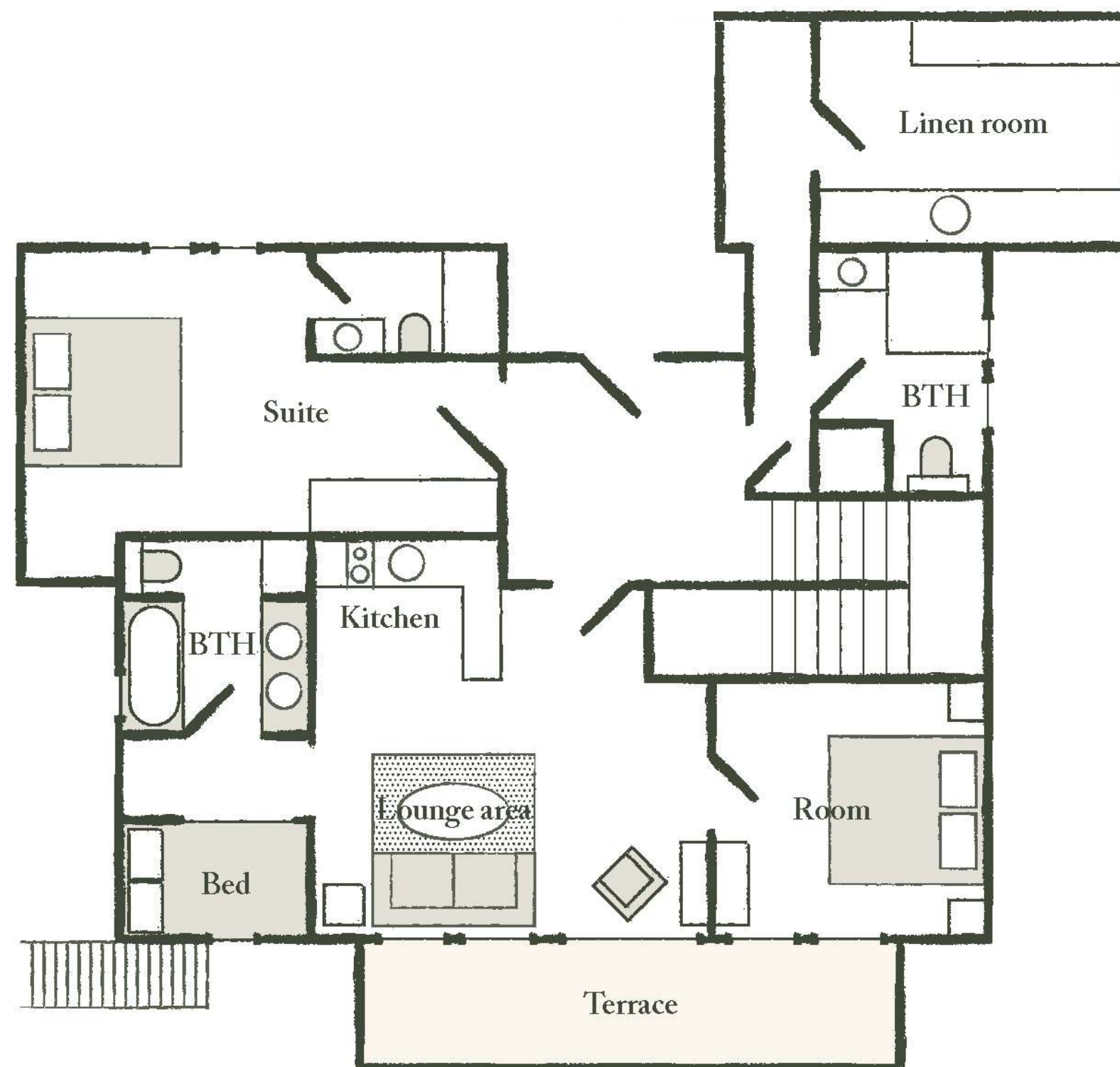
THE GARDEN FLOOR

Renovation work completed in 2023

It comprises a private studio with 1 bedroom plus an enclosed Savoyard bed. A bathroom or shower and toilet, a kitchen with dining area and a cosy lounge opening onto the private terrace.

A large utility room and an adjoining shower room with toilet.

A recent magnificent suite, independent of the studio, with dressing room and a very beautiful shower room and toilet.



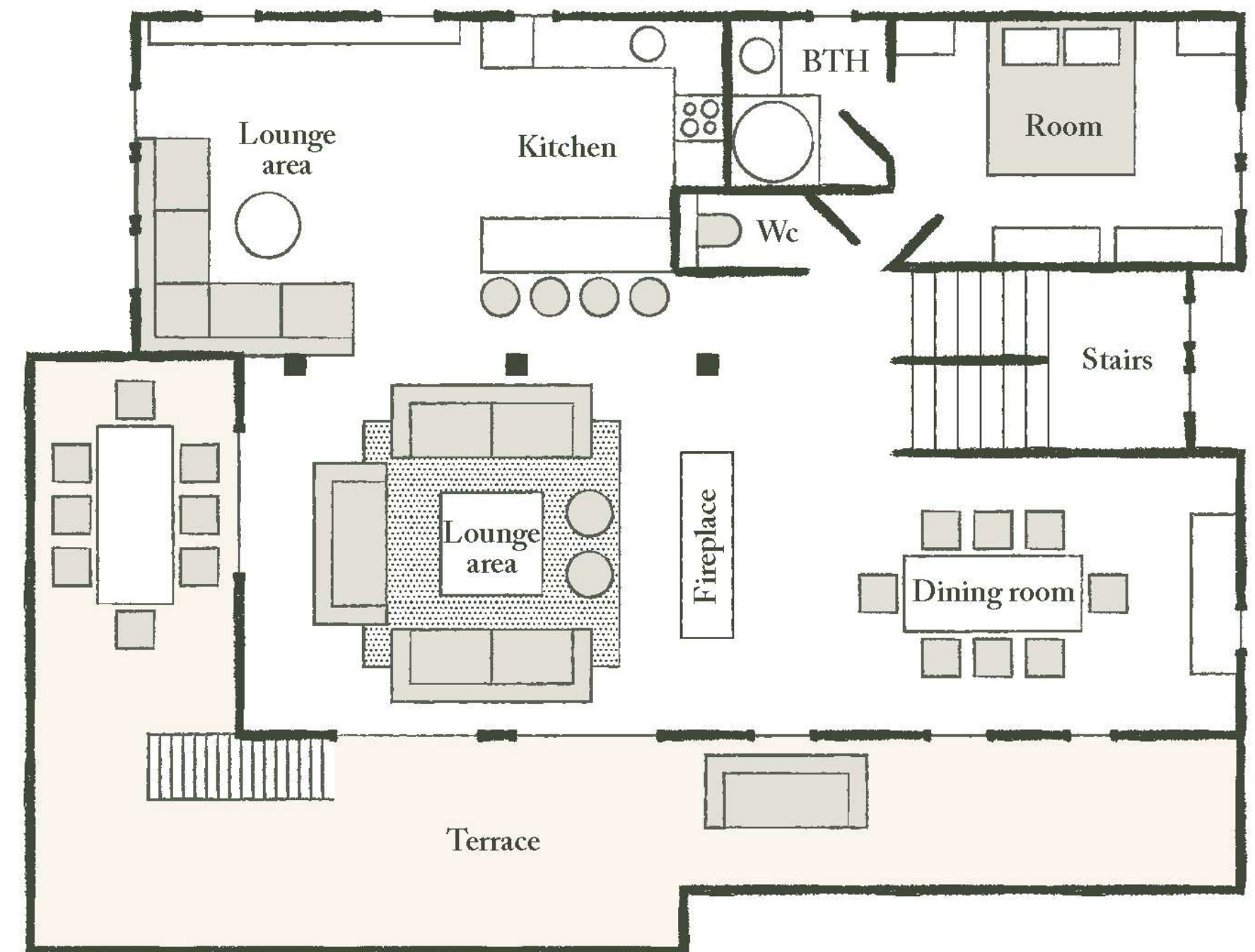
THE MAIN FLOOR

Totally renovated in 2023

A large living room with a contemporary fireplace and large sofas.

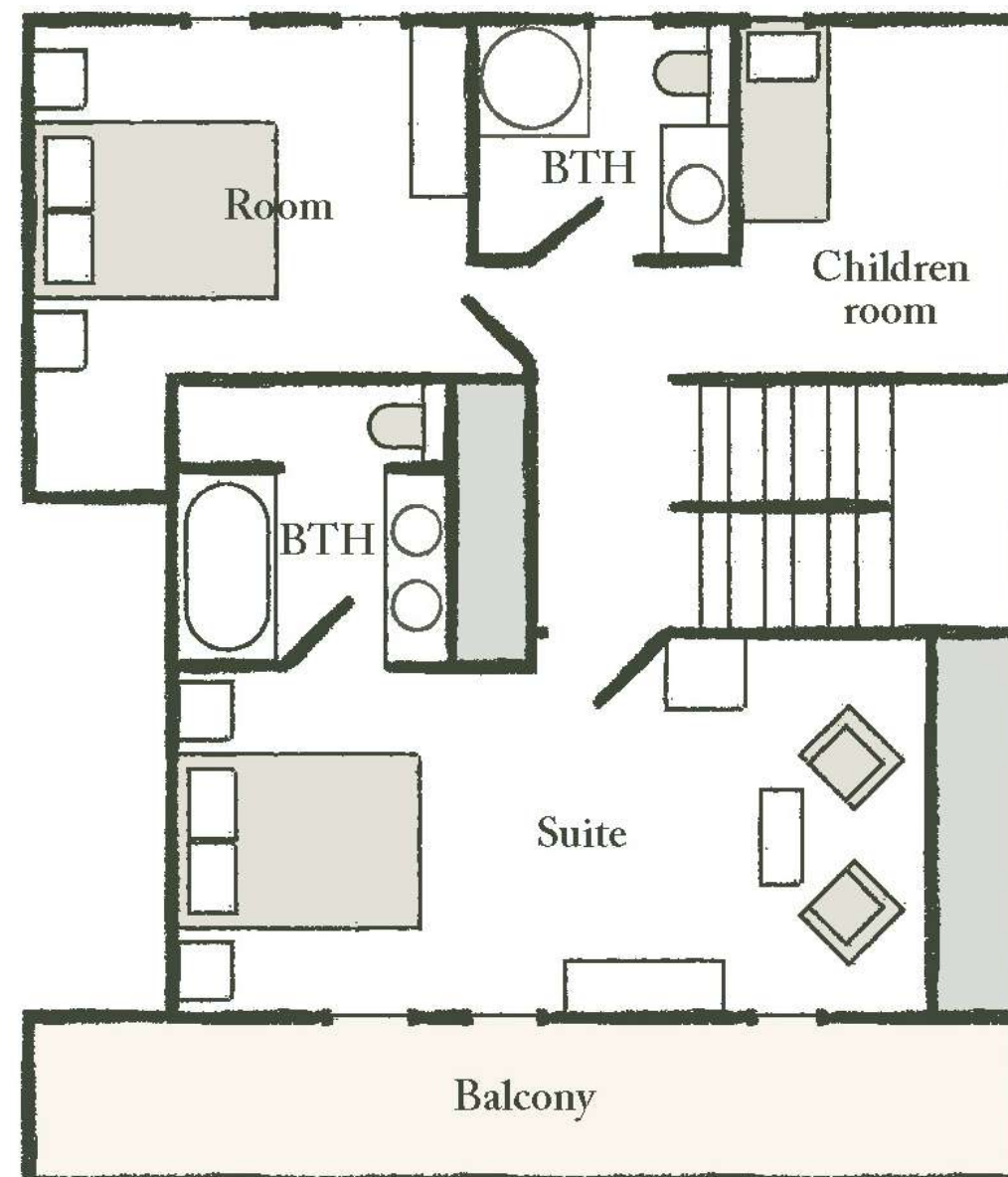
Large picture windows open onto the balcony. Adjoining the large living room is the dining room, with its large oak table. A small TV lounge opens onto a beautiful contemporary open-plan kitchen with a bar, ideal for family get-togethers.

A separate toilet and a double bedroom with its own shower room.



THE TOP FLOOR

2 bedrooms with character and 2 bathrooms occupy this charming floor under the wooden roof structure. The master bedroom, with its en suite bathroom and private balcony, is absolutely romantic. Lastly, there is a children's area under the roof structure with a single bed.



THE HOTEL L'ALPAGA*****

Staying in Chalet Baltus also means having access to the areas and services of L'Alpaga:

LA TABLE

de l'Alpaga

In 2023, the *La Table de l'Alpaga* restaurant was awarded 1 star in the Michelin Guide. This gastronomic restaurant offers a gourmet and sparkling cuisine prepared by our Chef Alexandre Baule, which puts the mountain in the spotlight and offers a contemporary and elegant setting.

le bistrot

de l'Alpaga

This restaurant offers bistro lounge cuisine by Chef Alexandre Baule. It's the ideal place for an informal lunch or dinner.

LE BAR

de l'Alpaga

Indoors or on the terrace, this is the perfect place to enjoy a refreshing drink or cocktail, prepared by our mixologist.

LE SPA

de l'Alpaga

The *Spa de l'Alpaga* has a fun indoor pool with bubbles and massage jets, a hammam and two treatment rooms. Outside, and facing Mont-Blanc, the Scandinavian bath will allow you to relax in an exceptional setting.



CHALET BALTUS

SERVICES INCLUDED

- Breakfast served in the restaurant
 - Internet access
 - Access to the spa
(leisure pool, hammam, Scandinavian bath, sauna facing Mont-Blanc and fitness area)
 - Free shuttle service from 11am to 8pm
- Hotel taxes and services (excluding tourist tax)
- Hotel concierge service
 - Room service

OPTIONAL SERVICES

- Private car with driver
- Private chef in chalet (evening or weekly)
- Breakfast delivery to chalet
- Secure covered parking





CHALET BALTUS

Because Megève is all about being outdoors and on the move, you can take advantage of a whole range of activities and experiences to get the most out of the area: cycling, hiking, canoeing, fishing, white-water sports, paragliding, hot-air ballooning or flying over the surrounding peaks in a plane or helicopter.



CONTACT

Sales Manager
Emily Hamilton

e.hamilton.alpaga@beaumier.com

+33 (0)6 31 15 65 19

+33 (0)4 50 91 48 72



GDS

AMADEUS (IA) = YX : MVVALP

SABRE (AA) = YX : 4800

GALILEO/APOLLO (UA) = YX : 16209

WORLDSPAN (IP) = YX : GVAAL

PEGASUS (WB) = YX : 71986